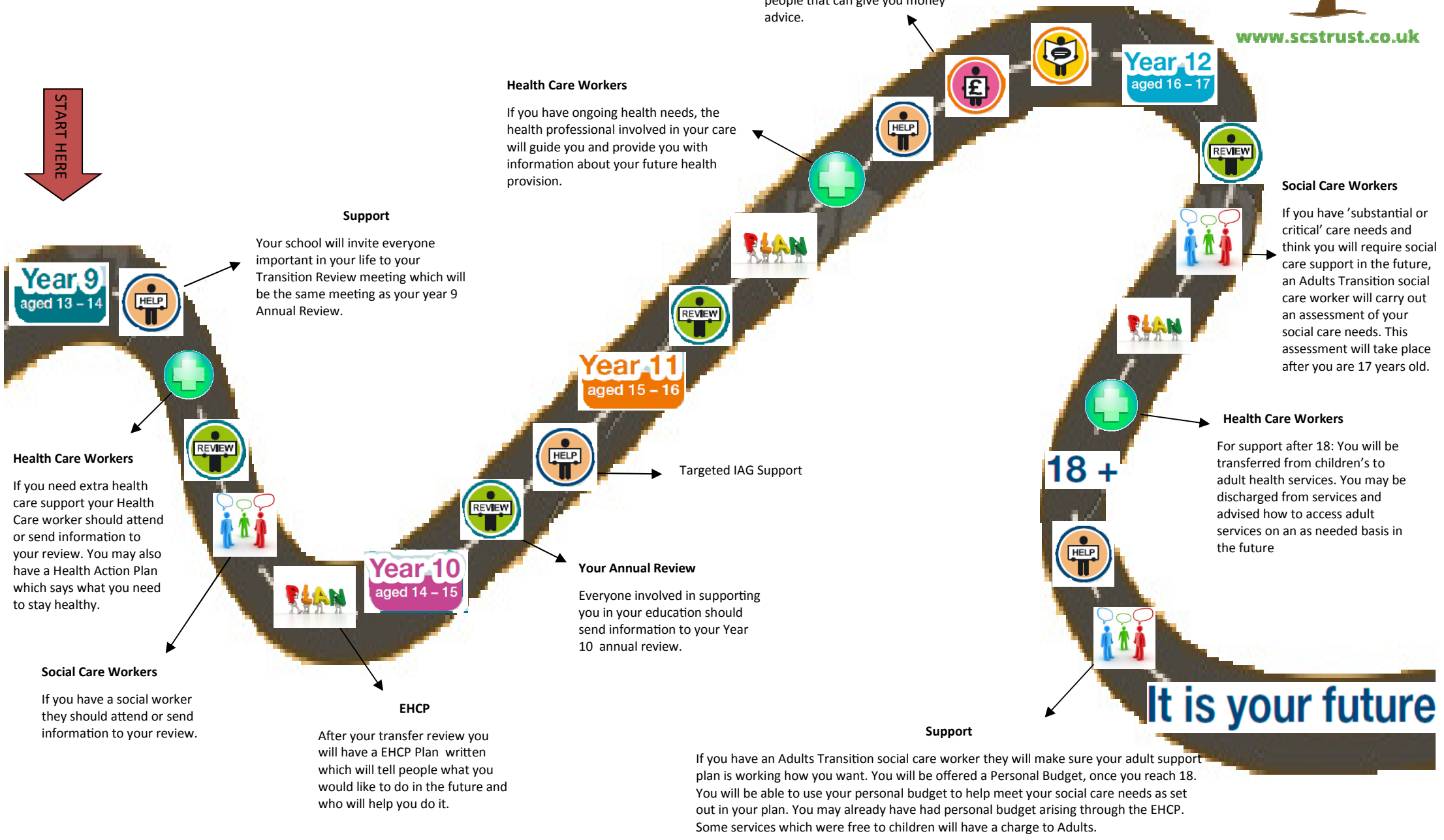


# Transition Pathway

Your journey from childhood to adulthood starts here and is called Transition



[www.scstrust.co.uk](http://www.scstrust.co.uk)



### Support

Your school will invite everyone important in your life to your Transition Review meeting which will be the same meeting as your year 9 Annual Review.

### Health Care Workers

If you have ongoing health needs, the health professional involved in your care will guide you and provide you with information about your future health provision.

### Money

There will be changes to your benefits, when you become 16. Your social worker (if you have one) or your school will be able to refer you to people that can give you money advice.

### Social Care Workers

If you have 'substantial or critical' care needs and think you will require social care support in the future, an Adults Transition social care worker will carry out an assessment of your social care needs. This assessment will take place after you are 17 years old.

### Health Care Workers

For support after 18: You will be transferred from children's to adult health services. You may be discharged from services and advised how to access adult services on an as needed basis in the future

### Health Care Workers

If you need extra health care support your Health Care worker should attend or send information to your review. You may also have a Health Action Plan which says what you need to stay healthy.

### Targeted IAG Support

### Your Annual Review

Everyone involved in supporting you in your education should send information to your Year 10 annual review.

### Social Care Workers

If you have a social worker they should attend or send information to your review.

### EHCP

After your transfer review you will have a EHCP Plan written which will tell people what you would like to do in the future and who will help you do it.

### Support

If you have an Adults Transition social care worker they will make sure your adult support plan is working how you want. You will be offered a Personal Budget, once you reach 18. You will be able to use your personal budget to help meet your social care needs as set out in your plan. You may already have had personal budget arising through the EHCP. Some services which were free to children will have a charge to Adults.

**It is your future**