



Personal Budgets

A guide for young people written by young people

Revised May 2018



What is a Personal Budget?



It is money that is given to provide extra support to a child or young person (0-25 years) who has Special Educational Needs and or a Disability (SEND).

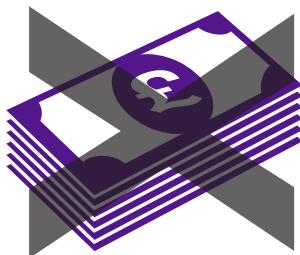


The child or young person will also need to have an Education, Health and Care (EHC) Plan. This says what their needs are and how the plan will help meet them.



The money that comes with a Personal Budget has to be used to pay for things that help meet the needs that are in the person's EHC Plan.

Deciding how the money is spent will be done with the young person and their parent/carer and the professionals who work with them.



Not everyone will be able to have a Personal Budget. It depends if extra money is needed to help meet the needs that are in the EHC Plan.



The decision about this will include looking at what services are already available and if these can meet the person's needs.

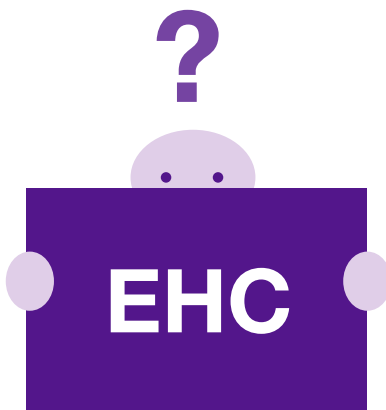
A Personal Budget can be used to meet the costs of education, social care and sometimes a person's special health care needs.

How do you get a Personal Budget?

JANUARY					
1	2	3	4	5	6
7	8	9	10	11	12
13	14	15	16	17	18
19	20	21	22	23	24
25	26	27	28	29	30
31					

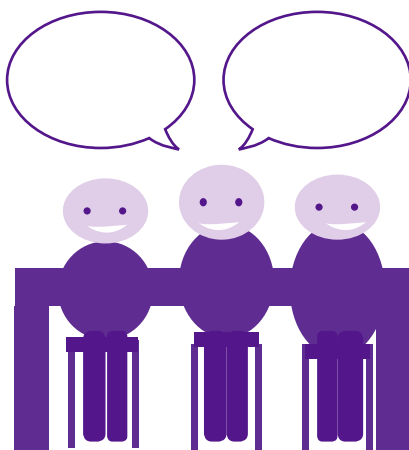
A young person or their parent/carer can ask to have a Personal Budget when the EHC Plan is being agreed. They can also ask for one when:

- their EHC Plan is being reviewed each year
- if it is agreed there have been changes in the young person's educational, health or social care needs.



The request for a Personal Budget is looked at when the EHC Plan is reviewed each year.

When a person's EHC Plan is being reviewed, their Personal Budget will also be reviewed. This could mean changes in the amount of the Personal Budget or it coming to an end.



Where possible, the young person and/or their parent/carer are asked what they think before a decision is made about changes to the Personal Budget.

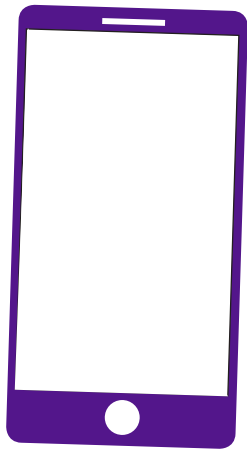
When someone has asked for a Personal Budget and not got one, or it is not as much as the person feels they need, an appeal can be made against the decision.

How do I find out more about Personal Budgets?



You can find out more about Personal Budgets including:

- How to go about getting one
- The ways of managing Personal Budgets
- What support and advice is available



On the Local Offer at ehd.liverpool.gov.uk or by contacting:

The Special Educational Needs, Assessment and Placement Service on: **0151 233 5969** or sen.team@liverpool.gov.uk

Liverpool & Knowsley Special Educational Needs & Disability Information Advice and Support Service (SENDIASS) (formerly known as Parent Partnership) on **0800 0129066** or liverpoolandknowsleysend@wired.me.uk

Notes:

Independent Supporters on **0151 702 5555**

This guide has been written by students from Sandfield Park School with Praxis, Community Interest Company.