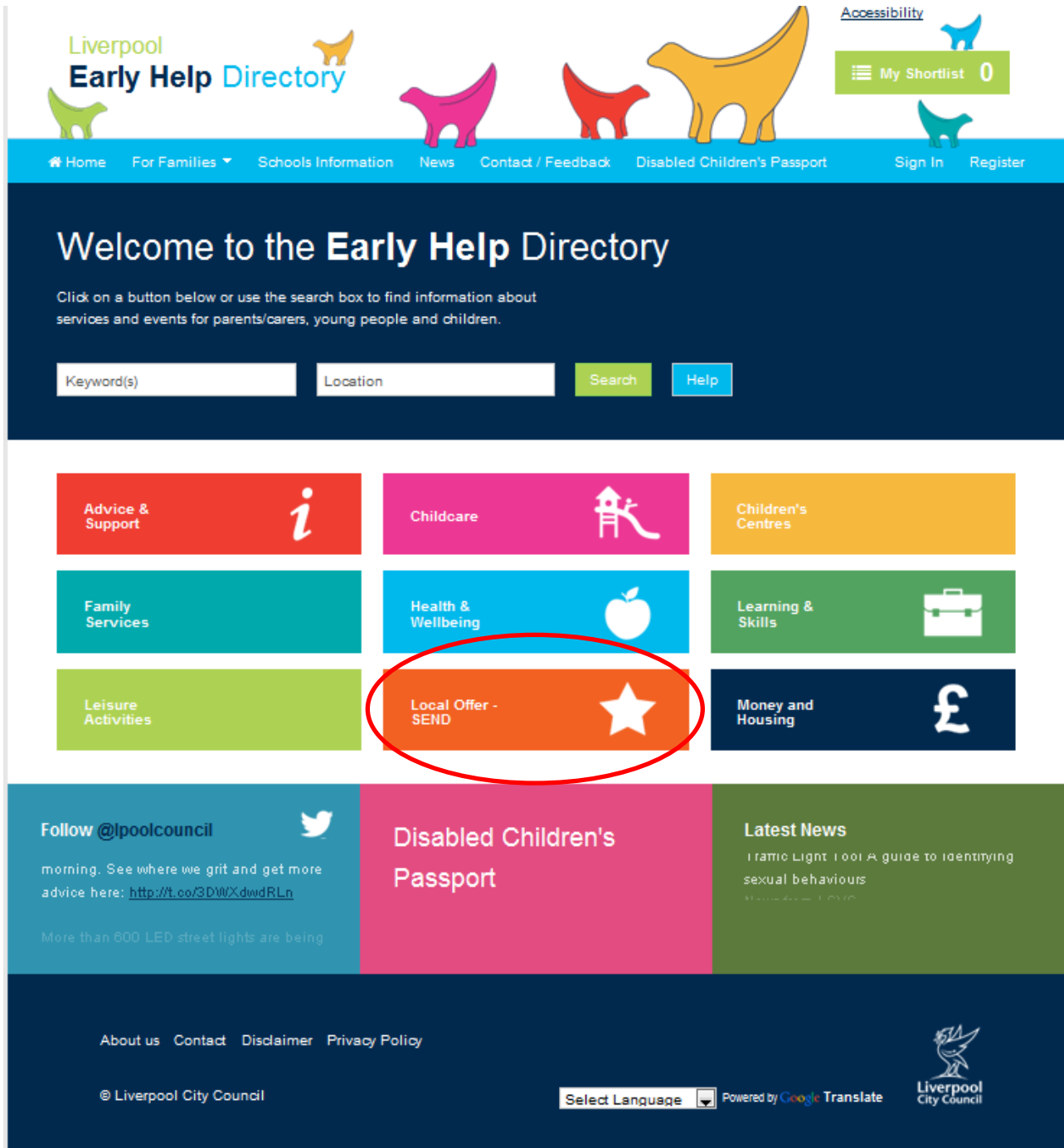


Dear Service Provider

Liverpool's Local Offer is part of the Early Help Directory (EHD) and has been created as an online directory that allows anyone to search for services available in Liverpool quickly and simply.

Fig: 1 Liverpool EHD Home page



Your provision has been included in the Local Offer section of the EHD and by registering on the site you will have access to your record. With access you will be able to add or remove details about your setting, keep your information up to date and amend any incorrect details that maybe showing.

You will find the EHD by clicking on this link <http://EHD.liverpool.gov.uk> or by typing it into your internet browser address bar.

Once you have accessed the EHD please register (top right). **PLEASE NOTE:** If you had already registered on the old site you will not need to register again. You can just Sign In, if you have forgotten your password please use the 'Forgot Your Password?' link.

An example of the registration page is below at fig: 2.

Fig: 2 The provider registration page

Liverpool Early Help Directory

Accessibility My Shortlist 0

Home For Families Schools Information News Contact / Feedback Disabled Children's Passport Sign In Register

All Categories Keyword(s) Location Search Help

Register your account

Register

First Name *

Surname *

Address *

Telephone *

Email *

Password *

Confirm Password *

By ticking this box, you are indicating that you have read and agree to the [Terms and Conditions](#)

Register

Why register?

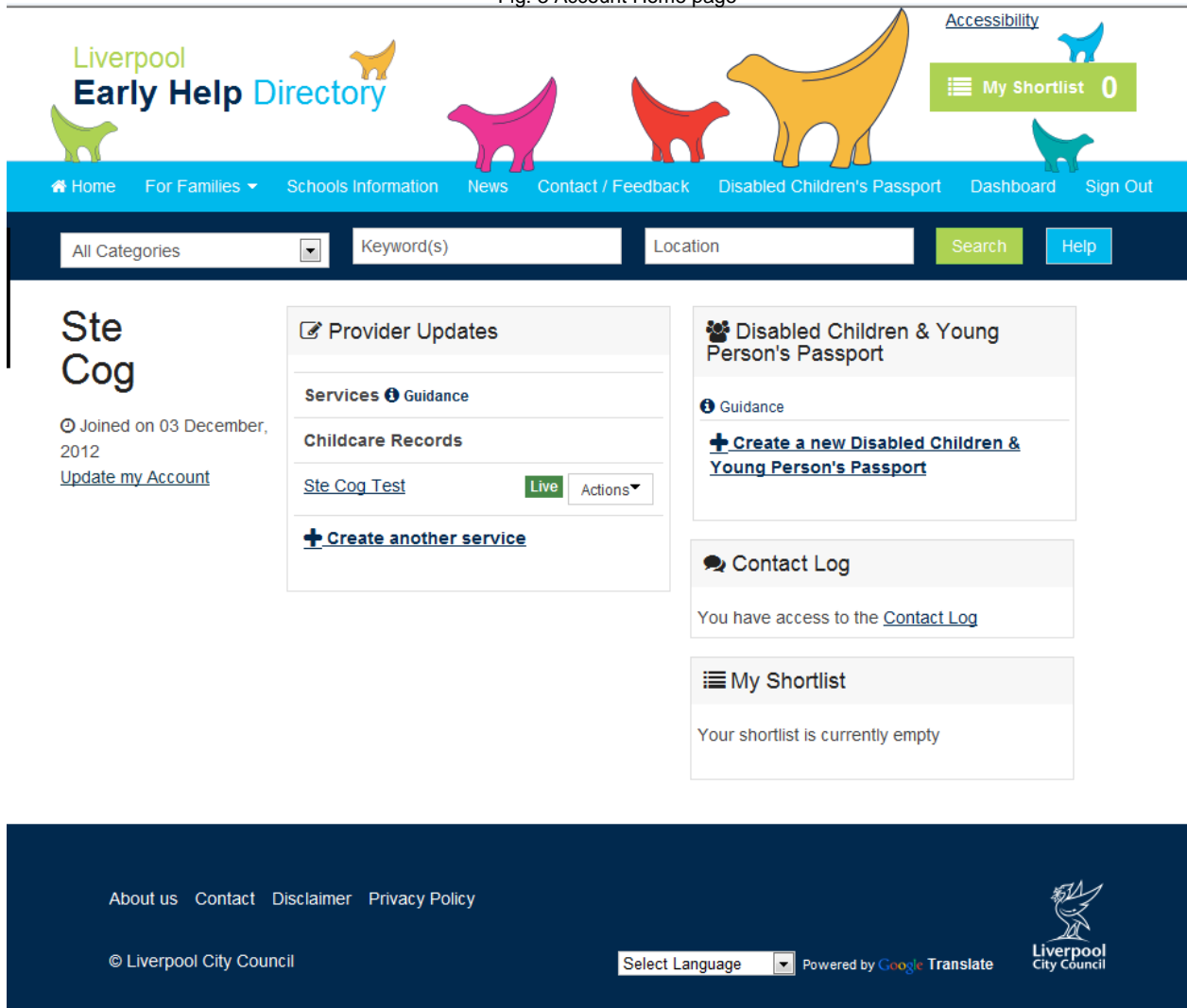
If you provide services, activities or events, then by registering here, you can get an account that will enable you to get listed on this site. You will also be able to return and keep your listing up to date. This is a free service.

About us Contact Disclaimer Privacy Policy

Liverpool

When your registration has been verified you will be able to Sign In. After signing in you will see a screen similar to below. In the section Provider Updates > Service Records you will see a list of records assigned to you (if you cannot see your records please e-mail me and I will assign the correct pages to you). You can see the status of the record and there is a dropdown list of Actions to choose from. The 'Create another service' link will allow you to create a new service record.

Fig: 3 Account Home page



If you have any questions or need any help with this process please contact me at Judith.moizer@liverpool.gov.uk – 0151 233 0499

Judith Moizer
 Family Information Officer
 Liverpool Family Information Service