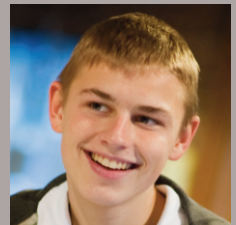




Sanctuary Supported Living: *East Kent Floating Support*



Our teams in Kent specialise in designing and delivering personalised floating support services.

We work with individuals to develop their strengths and to take control of their lives.

Floating Support

personalised support



We support people living in Kent who are vulnerable, require low to medium housing related support and are willing to engage with our service. Support is available for up to a year depending on an individual's needs.

Individuals accessing our services may have a range of issues including mental ill-health, substance misuse, homelessness and domestic abuse.

We work closely with other professionals, agencies and individuals to provide a comprehensive service. If we are not able to support in a particular area, we will signpost to the appropriate agency or individual. We also facilitate service users to access support when they leave our service, where appropriate, including family, social and peer support networks.

How we support our service users

Our team of experienced staff work alongside service users to identify their aspirations and goals and to help them to plan for a successful future.

This will then form the basis of their individual support plan which focuses on what is needed in certain areas of their life. The plan can be altered or updated to adapt to changing needs or goals at the service user's request.

We offer individuals support, information, advice and guidance to build on strengths and overcome challenges such as:

- Debts, budgeting, finances and benefits

- Accessing education, employment and training including employability skills
- Looking after their home and sustaining a tenure including rent and service charges
- Managing offending behaviours that may put their home at risk
- Developing practical life skills such as cooking and cleaning
- Initial access to health services
- Establishing links to public, private and voluntary sector services in the community

As an individual gains in confidence, floating support is gradually reduced until they are able to manage independently or have accessed and developed other support networks.

Our employees will support our service users to maximise their experience and personal potential wherever possible. We are committed to removing discrimination and harassment in our employment practices and service provision.

How to access our services

We are funded by Kent County Council. All referrals can be made to Kent County Council on 08458 247100 or floatingsupport@kent.gov.uk.

Referrals are accepted from statutory agencies such as social services and voluntary services including housing associations. Individuals may also refer themselves to our services.

Get in touch

Sanctuary Supported Living takes great pride in the quality and professionalism of its services. If you wish to speak directly to us about our services or need advice about how to make a referral, feel free to get in touch.

General Office for Kent:

Council Offices
Military Road
Canterbury
CT1 1YW

Tel: 01905 335730
Email: kentfs@sanctuary-housing.co.uk

East Kent (Ashford, Swale, Shepway, Dover, Canterbury and Thanet)

Steve Wood
Local Service Manager
Helen Heaps
Local Service Manager

Tel: 07436 805234
Email: stephen.wood@sanctuary-housing.co.uk
Tel: 07436 805247
Email: helen.heaps@sanctuary-housing.co.uk