

Royal Borough of Kensington
and Chelsea Town Hall,
Hornton Street
London
W8 7NX



Date: 18 June 2019

Dear Colleagues

RE: New Bi-Borough Childcare & Early Education Service

I am writing to update you on the progress that has been made since an Independent Operational Review was undertaken of the two sovereign Early Years' Teams in Westminster City Council (WCC) and Royal Borough of Kensington & Chelsea (RBKC) between July and October 2018.

Following the review and consultation with stakeholders, a new Bi-Borough Childcare & Early Education Service came into effect from the 1st April 2019. As a means of ensuring continuity of the service it was decided not to make any significant changes in the summer term and to launch the new service from September 2019.

During this interim period, we have built on the strengths of both teams to develop a new service model and offer. This new model will facilitate streamlined leadership and management, greater partnership working and a stronger more targeted training and support offer. In addition the new service model will allow for a more integrated approach to providing sufficient, good quality childcare and early years provision across the whole sector; this will extend to include school age childcare for up to 14 year olds.

We are delighted to welcome Iraklis Kolokotronis as the new Bi – Borough Strategic Lead for Childcare and Early Education Service who will be joining us on the 3rd July 2019. Once in post Iraklis will be informing you of the differentiated offer of support that the service will be providing from September along with a named Early Years and Inclusion Advisor for you and your setting. During the summer we are hoping to be able to share with you the traded training offer for 2019-2020 which is designed to support the sector in meeting statutory requirements and ensuring a highly trained and skilled workforce.

We value our partnership working with you and the service you provide to support access to childcare and early education places for our children. Therefore, to ensure minimum disruption to the service and to you we will be creating new opportunities for feedback and consultation to ensure the service continues to deliver high quality support to all providers.

Along with a copy of the new staffing structure and contact details for each member of staff, I am including, for reference, the new funding rates that were agreed at March

School Forum including the deprivation postcodes that came into effect in from 1st April 2019.

We will continue to keep you up to date of the progress and changes as they evolve and would like to thank you for your continued support. We also look forward to strengthening our partnerships and continuing to work with you in the future to ensure we achieve the very best of outcomes for our children.

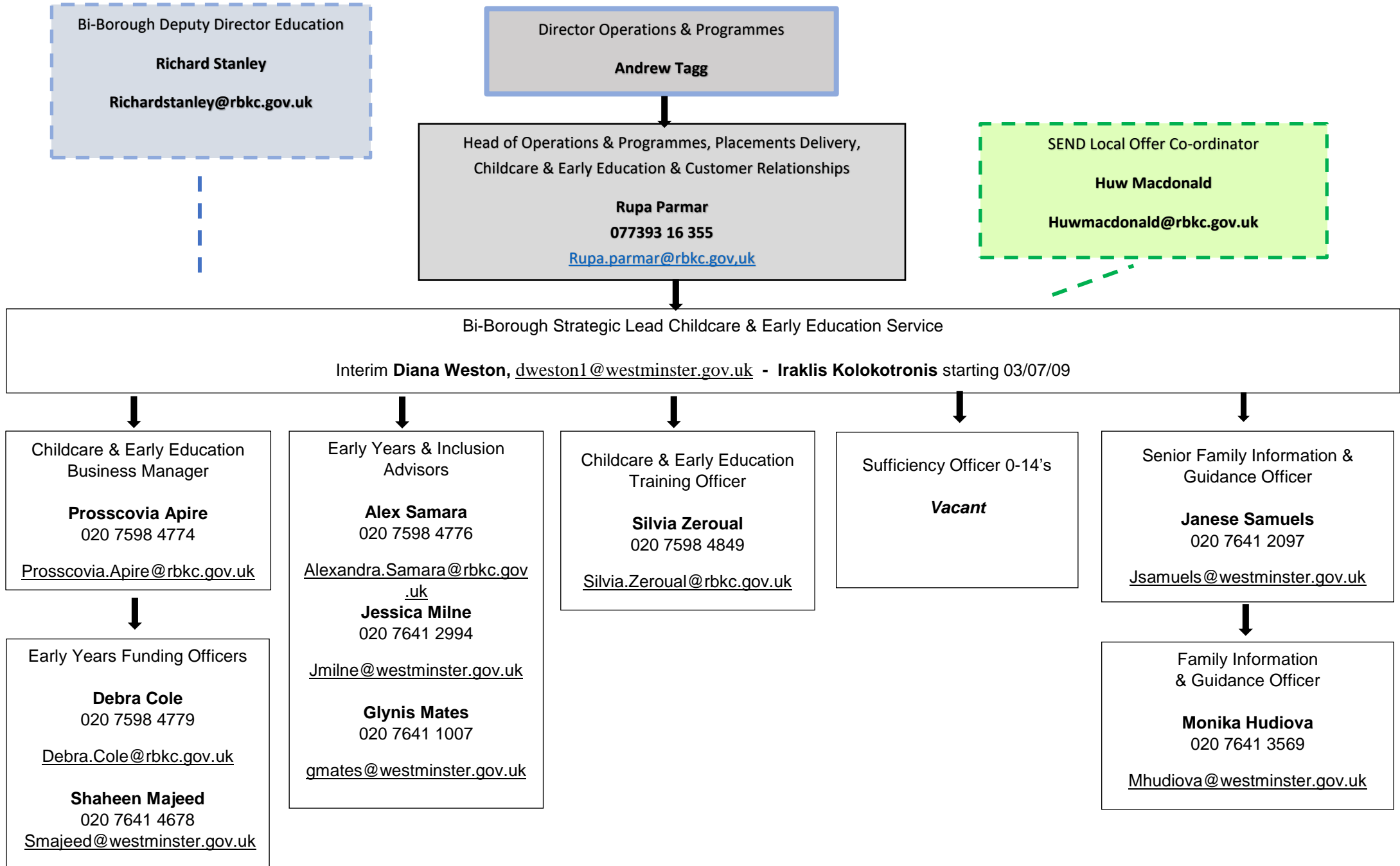
Kind regards

A handwritten signature in black ink, appearing to read 'Andrew Tagg', with a small dot at the end.

Andrew Tagg

Bi-Borough Director Operations & Programmes

Bi-Borough Childcare & Early Education Service Staffing Structure



Bi-Borough Childcare & Early Education Service Contact Information

Name	Job title	Contact
Rupa Parmar	Head of Placement Delivery, Customer Relations & Childcare & Early Education Service	Tel: 07739 316355 Email: Rupa.Parmar@rbkc.gov.uk
Iraklis Kolokotronis	Bi-Borough Strategic Lead Childcare & Early Education Service	Starting 03/07/2019
Prosscovia Apire	Childcare & Early Education Business Manager	Tel: 020 7598 4774 Email: Prosscovia.Apire@rbkc.gov.uk
Debbie Cole	Early Years Funding Officer – RBKC Providers	Tel: 020 7598 4779 or 07739 316132 Email: Debra.Cole@rbkc.gov.uk
Shaheen Majeed	Early Years Funding Officer – WCC Providers	Tel: 020 7641 4678 Email: smajeed@westminster.gov.uk
Alexandra Samara	Early Years & Inclusion Advisor	Tel: 020 7598 4776 or 07976 060260 Email: Alexandra.Samara@rbkc.gov.uk
Jess Milne	Early Years & Inclusion Advisor	Tel: 020 7641 2994 Email: jmilne@westminster.gov.uk
Glynis Mates	Early Years & Inclusion Advisor	Tel: 020 7641 1007 Email: gmates@westminster.gov.uk
Silvia Zeroual	Childcare & Early Education Training Officer	Tel: 020 7598 4849 Email: Silvia.Zeroual@rbkc.gov.uk
Vacant	Sufficiency Officer (0-14's)	
Janese Samuels	Senior Family Information & Guidance Officer	Tel: 020 7641 2097 Email: jsamuels@westminster.gov.uk
Monika Hudiova	Family Information & Guidance Officer	Tel 020 7641 3569 Email: Mhudiova@westminster.gov.uk

EYFF Funding Rates April 2019 - March 2020

	WCC	RBKC
3-4 Year Olds	£6.54 per hour	£6.65 per hour
Deprivation Fund for 3-4 Years Old only	£0.65 per hour (flat rate across all postcodes)	0.33 per hour (flat rate across all postcodes)
EYPP Fund for 3-4 Years Old only	£0.53 per hour	£0.53 per hour
DAF Fund for 3-4 Years Old only	£615 (one off payment)	£615 (one off payment)
Special Educational Needs Inclusion Fund (SENIF)	Variable	Variable
2 Year Olds	£6.50 per hour	£6.50 per hour

Deprivation

IDACI Scores

Band	WCC	RBKC
1	0.65	0.33
2	0.65	0.33
3	0.65	0.33
4	0.65	0.33
5	0.65	0.33
6	0.65	0.33